

# New Pattern Release 2021



Knife maker: Ted Dahlqvist

## Fafnir™

A dragon like pattern with its curved twisted lines forming waves and spots.

### About the pattern:

This is a new twisted pattern of ours and because of that it makes it a very versatile pattern. So you can use this pattern for wide, small, thick or thin projects.

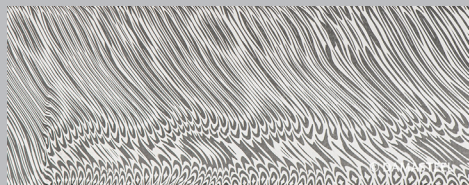
When grinding into Fafnir it reveals almost a snake or dragon like pattern with its curved twisted lines forming these waves and spots. And due to Fafnir being a twisted pattern it can benefit from a lot of different bevels to really get a lot of different looks out of the pattern.

### The story behind the name:

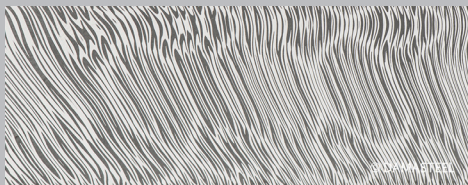
According to the Volsunga Saga Fafnir is a dwarf with a powerful arm and fearless soul. He guards his father's house of glittering gold and flashing gems.

He became ill-natured and greedy and ventured into the wilderness to keep his fortune. He turned into a dragon to guard his treasure. Fafnir breathed poison into the land around him so no one would go near him and his treasure, wreaking terror in the hearts of the people.

### Half straight bevel:



### Flat ground:



SÖDERFORS 1676

# DAMASTEEL®

CUTTING EDGE. AND LOOKS TOO.™



damasteel.com

© Damasteel AB. Damasteel® is a registered trademark, all product names are unregistered trademarks.

# Fafnir™

”My first idea was something along the lines of ”Elven business man”. The idea was to make a combination of a more traditional bowie and Elven weaponry with more curves. I wanted the aesthetics reminiscent of a set with a tie pin and cufflinks I own. I chose to make a large single edged fighter, as I felt the angled lines would provide an interesting and more aggressive look.

My favorite part of the entire knife is the spacer between the guard and the stabilized wood. In the middle groove, it has kind of an explosion on the top and bottom, which changes into the more angled lines found on the blade on the sides.

The more protruding border areas have a frill-like look which turned out really cool.”

*Ted Dahlqvist, knife maker*



Knife maker: Ted Dahlqvist



Knife maker: Johnny Stout

”I selected one of my existing folder models, plus, I created a new model for the project. I mixed the two new Damasteel patterns on each knife, choosing one pattern for the blade, and the other pattern for the bolsters. By building the folders with this new material, it gave the opportunity to be creative and showcase the steel patterns in ways that had not been seen before.

By selecting mammoth ivory for the handle scales, it showcases each knife as very elegant, and takes your eye to the patterns in the steel, without being distracted by the beautiful color in the handle scales.

*Johnny Stout, knife maker*

Read more about Fafnir at [damasteel.com](http://damasteel.com)

SÖDERFORS 1676  
**DAMASTEEL®**  
CUTTING EDGE. AND LOOKS TOO.™



© Damasteel AB. Damasteel® is a registered trademark, all product names are unregistered trademarks.